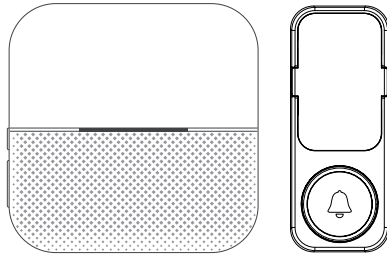


# Wireless Doorbell User Manual



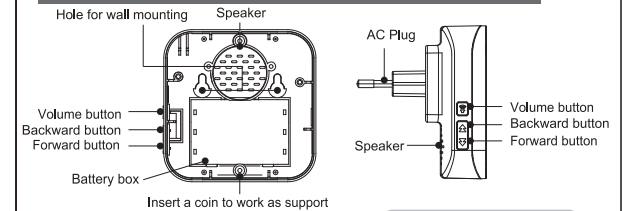
Please read the user manual carefully before use and installation.

## What You Should Know Before Using

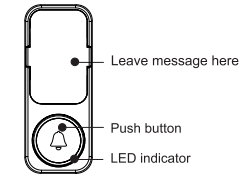
1. The transmitter(s) is (are) paired with receiver(s) and set to the default ringtone "Dingdong".  
If they are not paired, please refer to the "Quick Start" to pair the transmitter(s) with receiver(s) and set your favorite ringtone.
2. It is not advisable to mount the transmitter onto metal surfaces as this can block RF signals between the transmitter and the receiver. However, if this is the only option, we recommend that you use the sticky pad provided as opposed to using screws.
3. Operating range will decrease if battery power in the transmitter or receiver is low.
4. It is advisable to mount waterproof transmitter under some shelter to reduce the aging of the plastic materials.

- 1 -

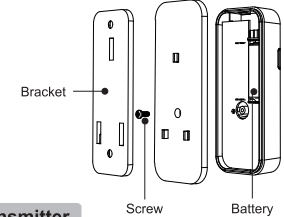
## Quick Start



### Battery Powered Receiver



### Plug-in Receiver



### Transmitter

- 2 -

**1. Sound Volume Control:** Short press the Volume Control button on the receiver. This switch toggles between High and Low volume (0-110dB).

- 2. Set Ringtone:** There are 52 ringtones to choose from.
- a. Short press the Music Forward or Backward Button to choose your favorite ringtone, the receiver playing is the ringtone selected.
  - b. Please follow the pairing steps (2)-(3) below to sync the new ringtone. The new ringtone will be set for the most recently synced transmitter.
  - c. Different ringtone can be set for each transmitter.

### 3. Pairing a transmitter to the receiver

(1). Please select your favourite ringtone before pairing.



Select ringtone

- 3 -

(2). Hold and press the **Volume Control** Button for about 5s until a "Ding-dong" is heard and the LED indicator starts flashing. You are now in pairing mode.



Hold volume button for 5s

(3). Quickly activate the transmitter within 5s to send a signal to the receiver. When the pairing (ringtone sync) is successful, activate the transmitter again, the receiver will play the selected ringtone automatically.



Activate the transmitter

### Remark:

- (1) Pairing mode will last for 5 seconds only.
- (2) Pairing mode will quit automatically after pairing is completed. If you didn't pair the transmitter with receiver successfully, please repeat the pairing steps (2)-(3).

- 4 -

### 4. Two or more transmitters pairing:

The pairing mode is available for a transmitter only each time. For two or more transmitters, please follow the pairing steps (1)-(3) once again to get transmitters paired one by one.

### 5. Reset:

Press **Music Forward** Button for about 5 seconds to reset receivers to default. When receiver sounds "Dingdong" with LED flashing that means reset succeeds, setting is back to default. It comes back to the 1st music, no transmitter is paired with receiver.



Hold forward button for 5s

## Receiver & Transmitter Installation

**Important:** Prior to installation, please test the doorbell wireless distance.

**For Battery Powered Receiver:** Put in three 1.5V AAA batteries, then you can choose whether to hang it up or just put it on desk. You can insert a coin into the backside of receiver to work as a support.

- 5 -

**For Plug-in Receiver:** Just plug receiver into standard outlet in room, then it will work.

**For Transmitter:** there are 2 installation methods

**Method 1: double-sided adhesive tape (Preferred install method)**

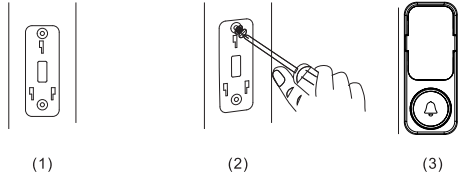
1. After ensuring the right mounting position, please clean the flat area where you intend to install transmitter.
2. Tear off one side of the double-sided adhesive tape and stick it to underside of transmitter bracket, tear off the other side and put the bracket onto wall, then press and hold for 10 seconds. Then hook the push button onto the bracket.

**Note:** please note that the double-sided adhesive tape will have poor adhesion, if put on dirty or uneven surface, sunlight or rain will affect the adhesion and may cause the transmitter to come off.

**Method 2: screw/anchors (Optional install method)**

Please prepare an electric drill, Phillips screwdriver and slotted screwdriver before installation.

1. Attach the bracket to wall and make two marks on the place of two mounting holes.
2. Drill two holes on the marked places, then insert 2 expansion bolts provided in the package.
3. Screw up the bracket and hook the push button onto the bracket.



**Trouble Shooting**

**1. The receiver doesn't sound**

- (1) Check the battery of transmitter or receiver, re-plug the AC plug-in receiver.
- (2) The receiver could be out of range from the transmitter.
- (3) The receiver may not have been paired with the transmitter.

**2. Operating range reduced**

- (1) Metal structures including uPVC door frames can reduce the range of product.
- (2) Avoid mounting the push or chime on or near metal structures.
- (3) Other equipment can cause radio interference that affects the pagers.
- (4) Lots of walls and ceilings between the transmitter and receiver will reduce the range.
- (5) Weak batteries will reduce range, please replace battery on time.

**Features**

- Modern and stylish design
- 52 selectable ringtones
- 5-level adjustable volume (include mute)
- Super long operation range
- Easy to install and use
- Easy to add additional transmitters or receivers
- Low power consumption

**Specification**

Battery in DC Receiver	3 X AAA Baatery (NOT Included)
Power Supply of AC Receiver	AC 110-230V
Battery in Transmitter	12V 23A Alkaline Battery (Included)
Optional Melodies	52
Volume Level	0-110dB, 5 levels
Plug Type	EU
Wireless Distance	up to 50m in open air
Expandable(Yes or No)	Yes
Working Frequency	433MHz±2MHz
Waterproof Level	IP55
Working Temperature	-20~ +50 C