



DESIGNLIGHT

SCANDINAVIAN AB

DOWNLIGHT

E-NR: 74 769 46

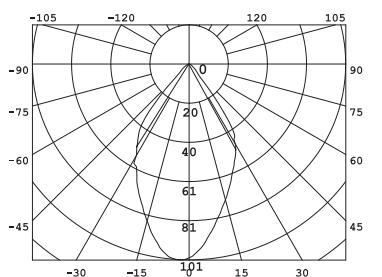
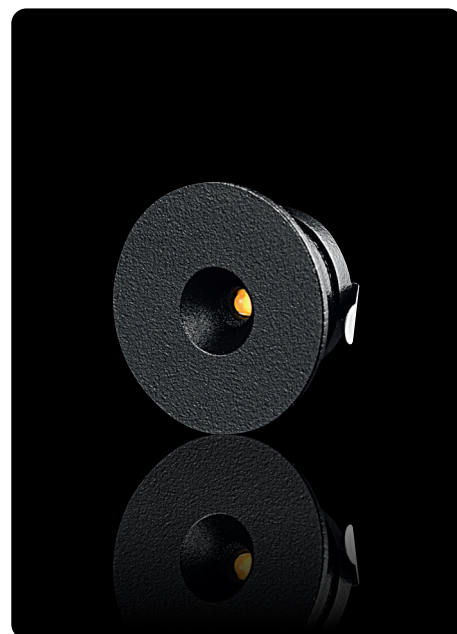
ART NR: P-132B

EFFEKT POWER	MATERIAL	KELVIN	ARMATURFÄRG ARMATURE COLOR	ANSLUTNING CONNECTION	TOTAL LUMEN	USEFUL LUMEN
1,2W	ALUMINIUM	3000K	BLACK	350MA	94LM	83LM

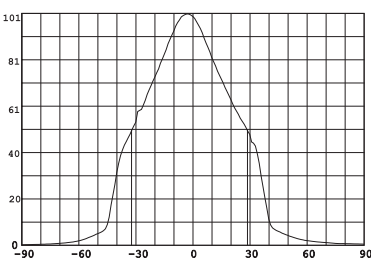
CE, RoHS



- STILREN
- DISKRET

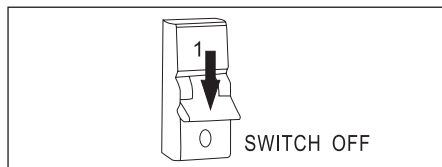


θav (50%) = 60°

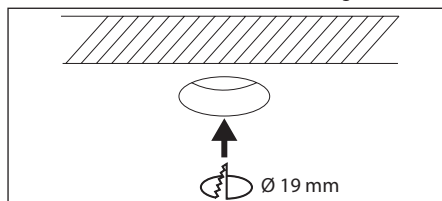


Avstånd	Belysningsstyrka	Spridnings vinkel 60°	Diam.
0.50m	216,96lx 401,61lx		89,09mm
1.00m	84,24lx 100,40lx		118,06mm
1.50m	34,11lx 44,62lx		177,09mm
2.00m	13,96lx 29,16lx		236,13mm
3.00m	6,02lx 11,16lx		354,19mm

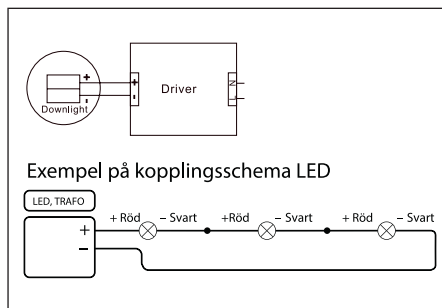
1. Stäng av strömmen/Turn off the power



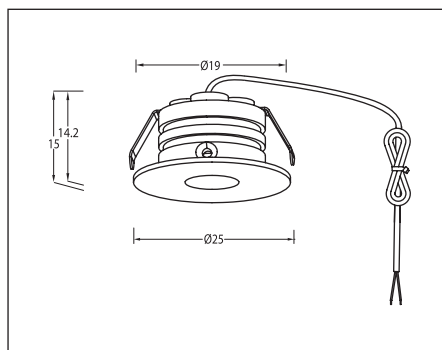
2. Borra hål i taket/Drill hole in ceiling



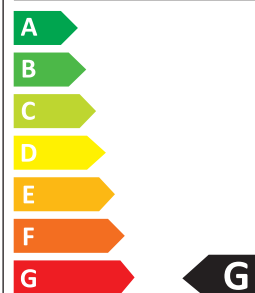
3. Anslut till LED-drivern/Connect to LED driver



Mått/Dimension



Designlight Scandinavian AB
P-132B



1 kWh/1000h



2019/2015

SAKERHET:

- 1 Läs igenom hela manualen noggrant före installation.
- 2 Kontrollmät ALLTID diametern före håltagning i tak.
- 3 Kontrollera att drivdonet är anpassat för det antal lampor som ska installeras.
- 4 Försäkra dig om att spänningen är fränslagen före installation eller underhåll.
- 5 Installation ska utföras av behörig elektriker.
- 6 Ljuskällan är ej utbytbar. Hela armaturen måste bytas när ljuskällan är förbrukad.

SAFETY:

- 1 Read the entire manual carefully before installation.
- 2 ALWAYS check the diameter before drilling holes in the ceiling.
- 3 Check that the driver is adapted to the number of lamps to be installed.
- 4 Make sure that the power is switched off before installation or maintenance.
- 5 Installation must be performed by a qualified electrician.
- 6 The light source of this luminaire is not replaceable, when the light source reaches its end of life the whole luminaire shall be replaced.

1.900K	2.700-3.000K	4.000-4.500K	4.800K	5.000-5.000K	7.000-7.500K	10.000K
STEARINLJUS CANDLE	VARMVIT WARM WHITE	NATURLIG VIT NATURAL WHITE	SOLLJUS DIRECT SUN	VITT DAGSLJUS DAY WHITE	KALLVIT COOL WHITE	BLÅ HIMMEL BLUE SKY

DESIGNLIGHT
SCANDINAVIAN AB

DESIGNLIGHT SCANDINAVIAN AB · TOFFELVÄGEN 1 · 342 60 MOHEDA
KUNDCENTER: TELEFON 0472-716 10 · FAX 0472-716 09 · INFO@DESIGNLIGHT.NU · WWW.DESIGNLIGHT.NU