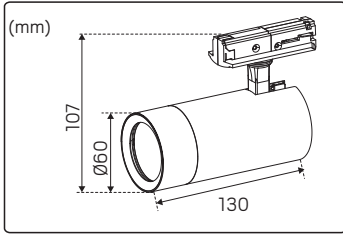
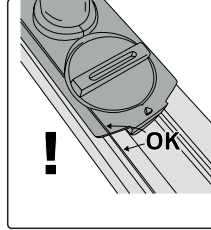
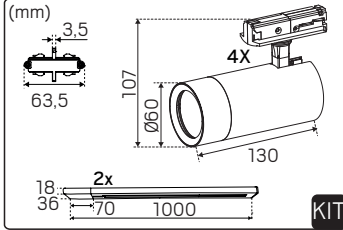


Optic Track XS 1-phase

hidealite



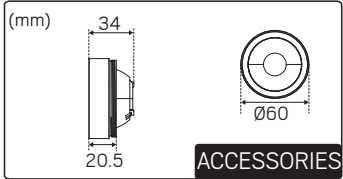
E-nr	Snro	El.nr	Gtin	Name	LED color	Color	Effect
74 037 79	41 585 92	32 176 88	7392971151335	Optic Track XS 1-phase 36° White Tune	2000-3000K Tune	White	9.3W
74 037 80	41 585 93	32 176 89	7392971151342	Optic Track XS 1-phase 36° White	2700/3000K CCT DIP	White	9.7W
74 037 81	41 585 94	32 176 90	7392971151359	Optic Track XS 1-phase 36° Black Tune	2000-3000K Tune	Black	9.3W
74 037 82	41 585 95	32 176 91	7392971151366	Optic Track XS 1-phase 36° Black	2700/3000K CCT DIP	Black	9.7W
74 037 83	41 585 96	32 176 92	7392971151373	Optic Track XS Kit 1-phase 36° White	2700/3000K CCT DIP	White	9.7W
74 037 84	41 585 97	32 176 93	7392971151380	Optic Track XS Kit 1-phase 36° Black	2700/3000K CCT DIP	Black	9.7W



For explanation of symbols see www.hidealite.se | www.hidealite.com | www.hidealite.fi | www.hidealite.no | www.hidealite.dk

ACCESSORIES

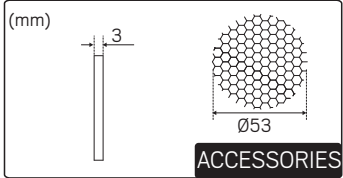
Lens Optic Track XS 36°



E-nr	Snro	El.nr	GTIN	Name
74 037 92	41 586 05	32 462 01	7392971151465	Honeycomb Optic Track XS
74 037 99	41 586 12	32 462 08	7392971151533	Lens Optic Track XS 36° White
74 038 00	41 586 13	32 462 09	7392971151540	Lens Optic Track XS 36° Black

Visit www.hidealite.com to see our Optic Track range.

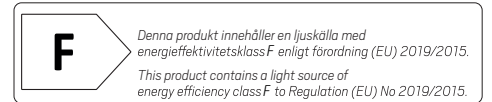
Honeycomb Optic Track XS



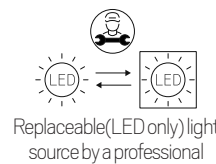
Number	GTIN	Name	Remark
X352	7392971151830	LED-Modul Optic Track XS Tune	To order spareparts, contact Hidealite customer support.
X354	7392971151847	LED-Modul Optic Track XS	
X356	7392971151861	Driver Optic Track XS White	
X373	7392971151885	Driver Optic Track XS Black	
X377	7392971151915	Driver Optic Track XS White Tune	
X378	7392971151922	Driver Optic Track XS Black Tune	

SAFETY INSTRUCTIONS

- en** Read these instructions carefully before commencing installation and retain for future reference. The luminaire should be installed by a licensed electrician and in accordance with local regulations. Make sure that the power is off before installation or maintenance.
- sv** Läs dessa instruktioner före installationen påbörjas och lämna den vidare till brukaren av anläggningen. Armaturen skall installeras av behörig installatör och enligt gällande föreskrifter. Se till att spänningen är frånslagen före installation eller underhåll.
- fi** Lue nämä ohjeet ennen asentamista ja luovuta ohjeet valaisimen seuraavalle käyttäjälle. Valaisimen saa asentaa valtuutettu asentaja voimassa olevien määräysten mukaisesti. Varmista, että jännite on kytketty päältä ennen asennusta ja huoltoa.
- no** Les disse instruksjonene før du starter installeringen, og gi den deretter videre til anleggets bruker. Armaturen skal installeres av en godkjent installatør og i henhold til gjeldende lover og regler. Sørg for at strømmen er koblet fra før installering og ved vedlikehold.
- da** Læs denne vejledning omhyggeligt, før installationen udføres og gem den til fremtidig brug. Armaturet skal installeres af en autoriseret installatør i henhold til gældende love og regler. Sørg strømmen er afbrudt før installation og vedligeholdelse.
- de** Lesen Sie diese Anweisungen sorgfältig, bevor Sie mit der Installation beginnen, und bewahren Sie sie für späteres Nachschlagen auf. Dieses Leuchtmittel muss durch einen lizenzierten Elektriker im Einklang mit den örtlichen Vorschriften installiert werden. Stellen Sie vor Installations- oder Wartungsarbeiten sicher, dass keine Spannung mehr anliegt.
- pl** Przed przystąpieniem do instalacji należy się uważnie zapoznać z instrukcją i zachować ją na przyszłość. Oprawę oświetleniową powinien zainstalować uprawniony elektryk zgodnie z miejscowymi przepisami. Przed instalacją lub konserwacją wyłączyć zasilanie.
- fr** Lisez attentivement ces consignes avant de commencer l'installation. Pensez également à vous y reporter ultérieurement. Le luminaire doit être installé par un électricien agréé, conformément à la réglementation locale. Veillez à couper le courant avant l'installation et toute opération de maintenance.



We focus on sustainability using recycled material for creating innovative luminaires, as well as replaceable LEDs and drivers. Luminaires built for the future!

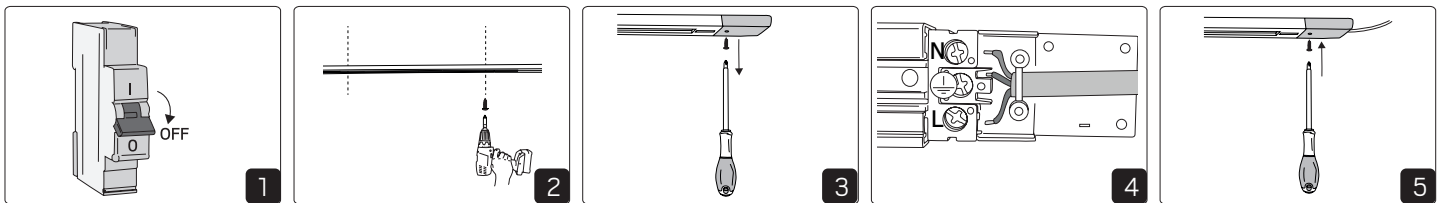


Replaceable (LED only) light source by a professional

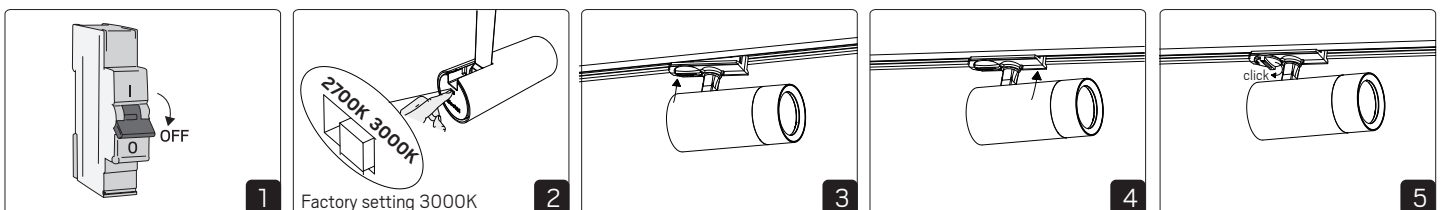


Replaceable control gear by a professional

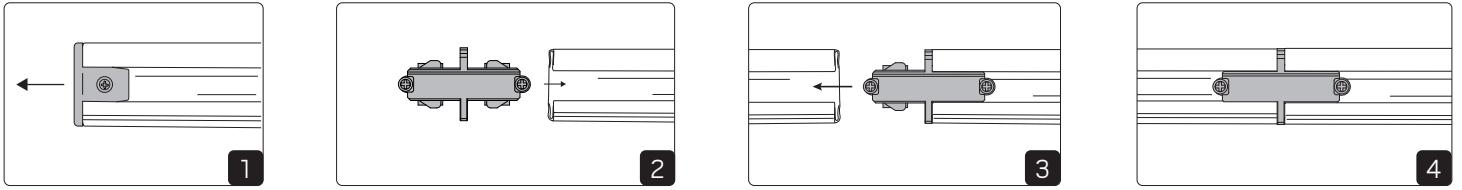
Installation



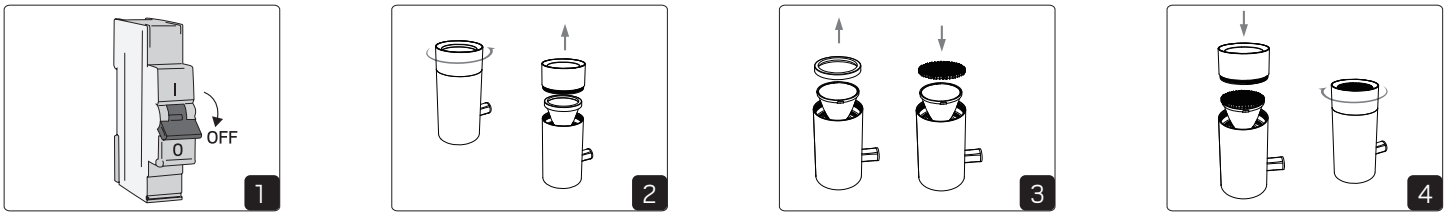
Installation



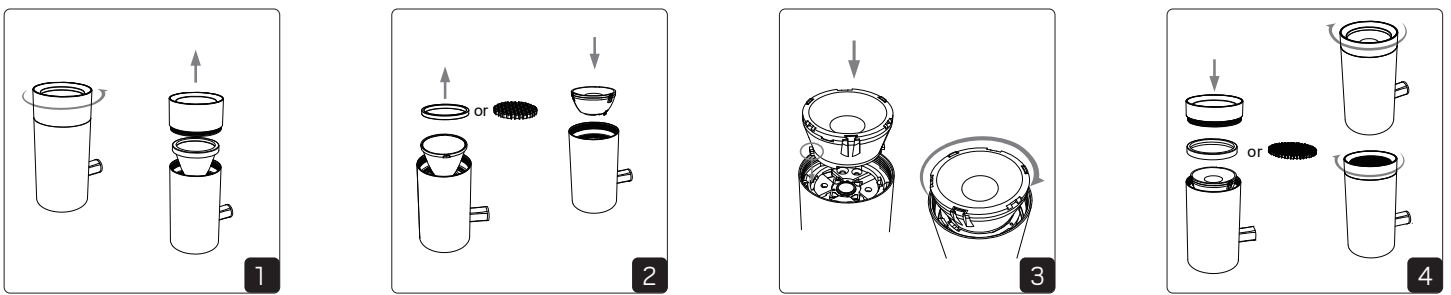
Installation - Through wiring



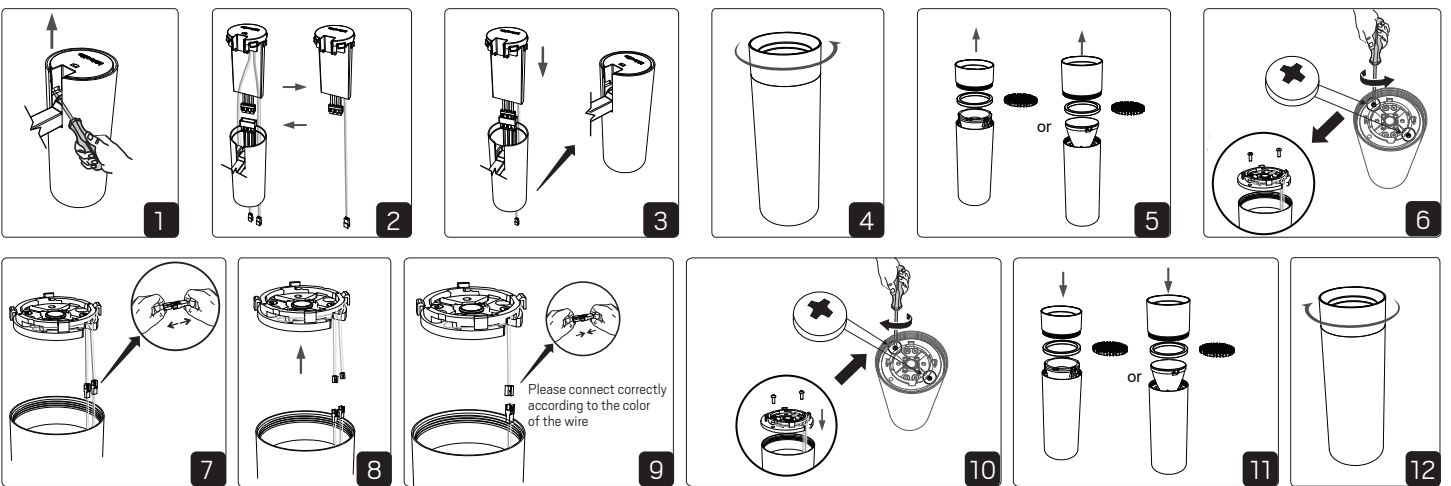
Add honeycomb



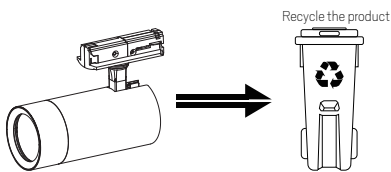
Replace reflector with lens



Replace LED module and driver



Recycling



- ① Metal
- ② Plastic
- ③ Electronic

