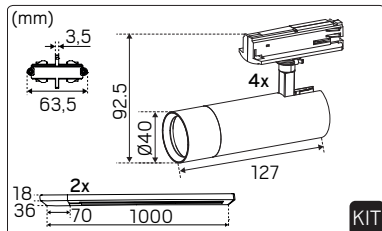
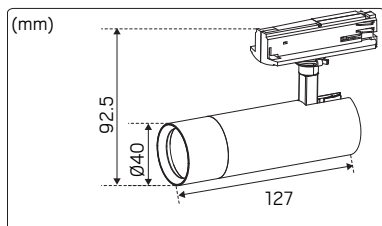
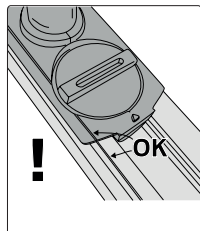


Optic Track XXS 1-phase

hidealite



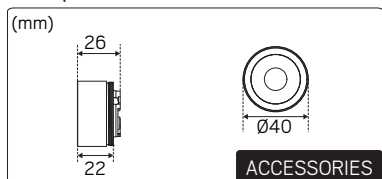
E-nr	Snro	El.nr	GTIN	Name	LED color	Color	Effect
74 037 73	41 585 86	32 176 82	7392971151274	Optic Track XXS 1-phase 36° White Tune	2000-2700K Tune	White	5W
74 037 74	41 585 87	32 176 83	7392971151281	Optic Track XXS 1-phase 36° White	2700/3000K CCT DIP	White	5.4W
74 037 75	41 585 88	32 176 84	7392971151298	Optic Track XXS 1-phase 36° Black Tune	2000-2700K Tune	Black	5W
74 037 76	41 585 89	32 176 85	7392971151304	Optic Track XXS 1-phase 36° Black	2700/3000K CCT DIP	Black	5.4W
74 037 77	41 585 90	32 176 86	7392971151311	Optic Track XXS Kit 1-phase 36° White	2700/3000K CCT DIP	White	5.4W
74 037 78	41 585 91	32 176 87	7392971151328	Optic Track XXS Kit 1-phase 36° Black	2700/3000K CCT DIP	Black	5.4W



For explanation of symbols see www.hidealite.se | www.hidealite.com | www.hidealite.fi | www.hidealite.no | www.hidealite.dk

ACCESSORIES

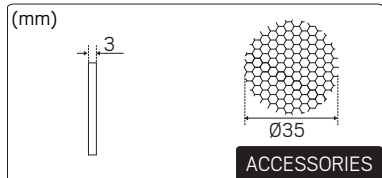
Lens Optic Track XXS 36°



E-nr	Snro	El.nr	GTIN	Name
74 037 91	41 586 04	32 462 00	7392971151458	Honeycomb Optic Track XXS
74 037 97	41 586 10	32 462 06	7392971151519	Lens Optic Track XXS 36° White
74 037 98	41 586 11	32 462 07	7392971151526	Lens Optic Track XXS 36° Black

Visit www.hidealite.com to see our Optic Track range.

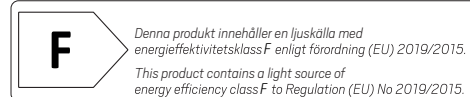
Honeycomb Optic Track XXS



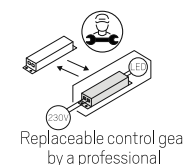
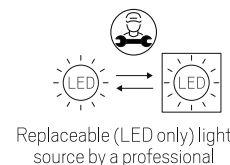
Number	GTIN	Name	Remark
X350	7392971151816	LED-Modul Optic Track XXS Tune	To order spareparts, contact Hidealite customer support.
X351	7392971151823	LED-Modul Optic Track XXS	
X353	7392971151878	Driver Optic Track XXS White	
X355	7392971151854	Driver Optic Track XXS Black	
X375	7392971151892	Driver Optic Track XXS White Tune	
X376	7392971151908	Driver Optic Track XXS Black Tune	

SAFETY INSTRUCTIONS

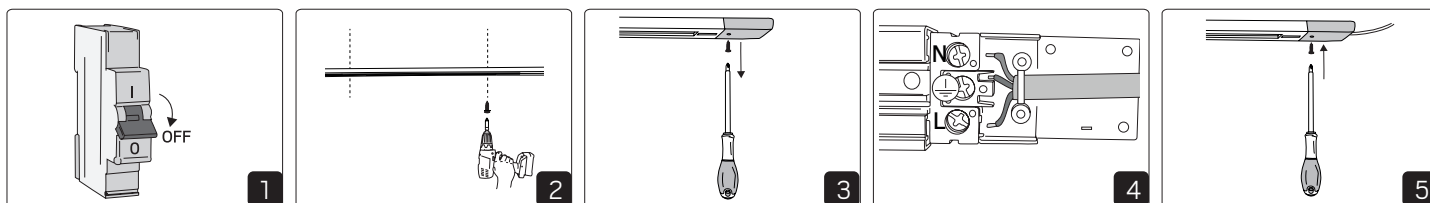
- en** Read these instructions carefully before commencing installation and retain for future reference. The luminaire should be installed by a licensed electrician and in accordance with local regulations. Make sure that the power is off before installation or maintenance.
- sv** Läs dessa instruktioner före installationen påbörjas och lämna den vidare till brukaren av anläggningen. Armaturen skall installeras av behörig installatör och enligt gällande föreskrifter. Se till att spänningen är frånslagen före installation eller underhåll.
- fi** Lue nämä ohjeet ennen asentamista ja luovuta ohjeet valaisimen seuraavalle käyttäjälle. Valaisimen saa asentaa valtuutettu asentaja voimassa olevien määräysten mukaisesti. Varmista, että jännite on kytketty päältä ennen asennusta ja huoltoa.
- no** Les disse instruksjonene før du starter installeringen, og gi den deretter videre til anleggets bruker. Armaturen skal installeres av en godkjent installatør og i henhold til gjeldende lover og regler. Sørg for at strømmen er koblet fra før installering og ved vedlikehold.
- da** Læs denne vejledning omhyggeligt, før installationen udføres og gem den til fremtidig brug. Armaturet skal installeres af en autoriseret installatør i henhold til gældende love og regler. Sørg strømmen er afbrudt før installation og vedligeholdelse.
- de** Lesen Sie diese Anweisungen sorgfältig, bevor Sie mit der Installation beginnen, und bewahren Sie sie für späteres Nachschlagen auf. Dieses Leuchtmittel muss durch einen lizenzierten Elektriker im Einklang mit den örtlichen Vorschriften installiert werden. Stellen Sie vor Installations- oder Wartungsarbeiten sicher, dass keine Spannung mehr anliegt.
- pl** Przed przystąpieniem do instalacji należy się uważnie zapoznać z instrukcją i zachować ją na przyszłość. Oprawę oświetleniową powinien zainstalować uprawniony elektryk zgodnie z miejscowymi przepisami. Przed instalacją lub konserwacją wyłączyć zasilanie.
- fr** Lisez attentivement ces consignes avant de commencer l'installation. Pensez également à vous y reporter ultérieurement. Le luminaire doit être installé par un électricien agréé, conformément à la réglementation locale. Veillez à couper le courant avant l'installation et toute opération de maintenance.



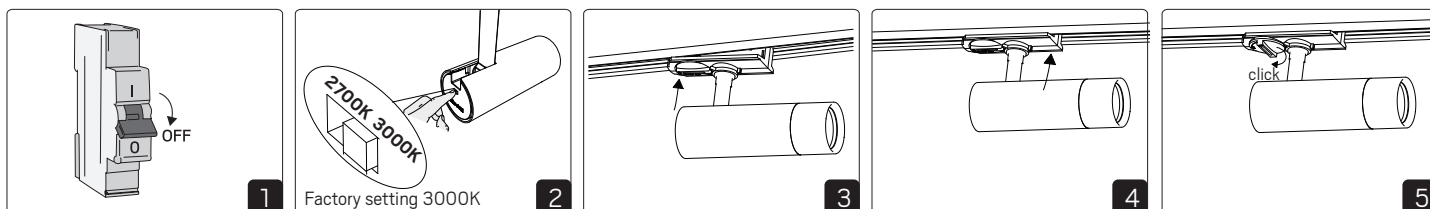
We focus on sustainability using recycled material for creating innovative luminaires, as well as replaceable LEDs and drivers. Luminaires built for the future!



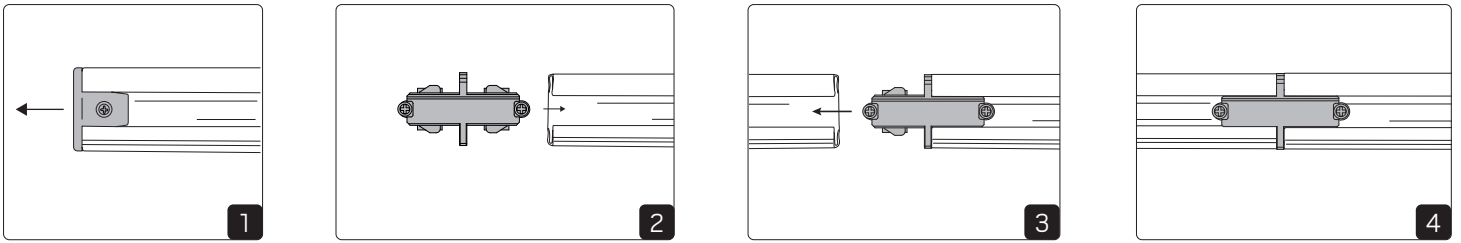
Installation



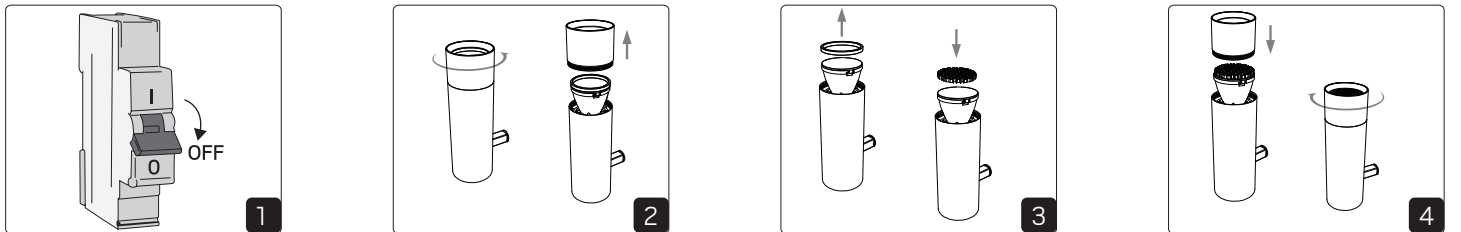
Installation



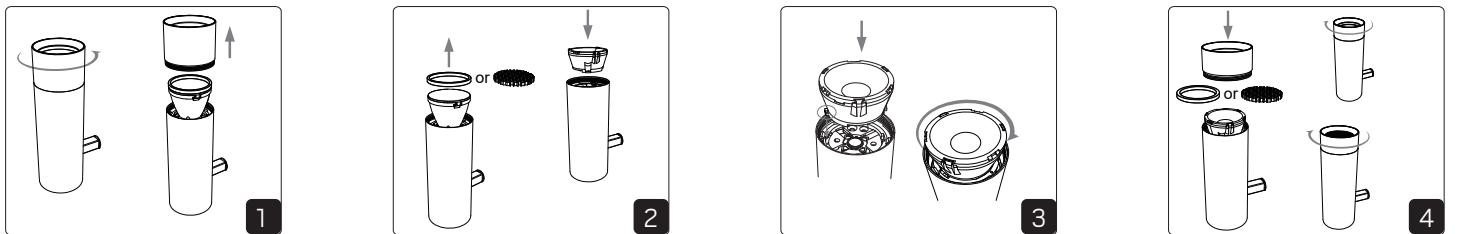
Installation - Through wiring



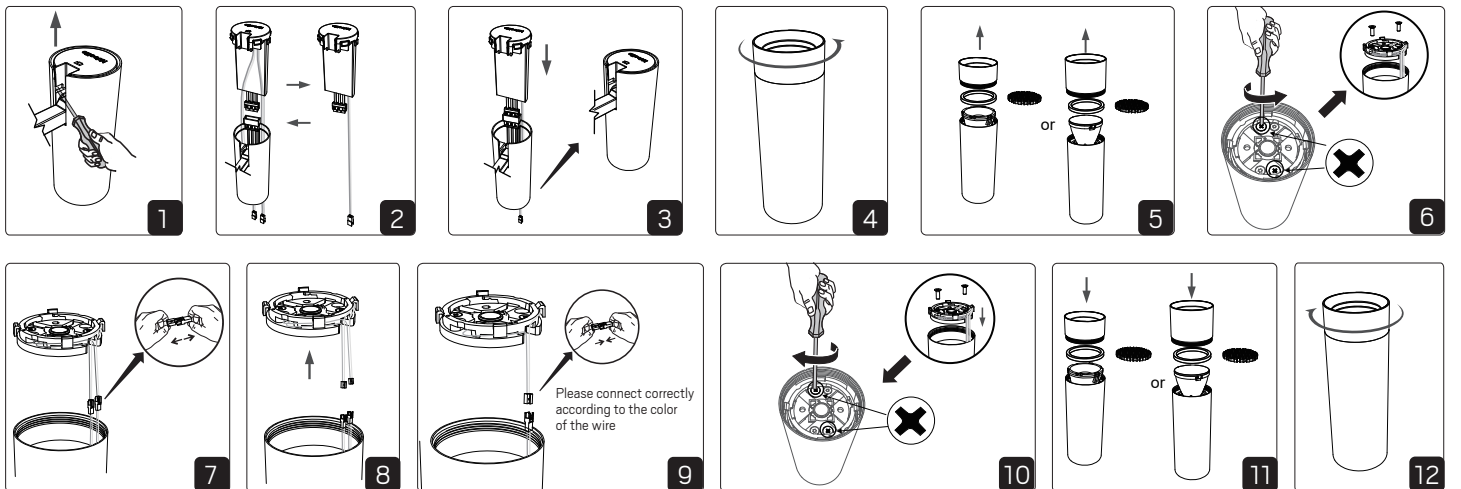
Add honeycomb



Replace reflector with lens



Replace LED module and driver



Recycling

